

PUMPS & FLUID ENDS

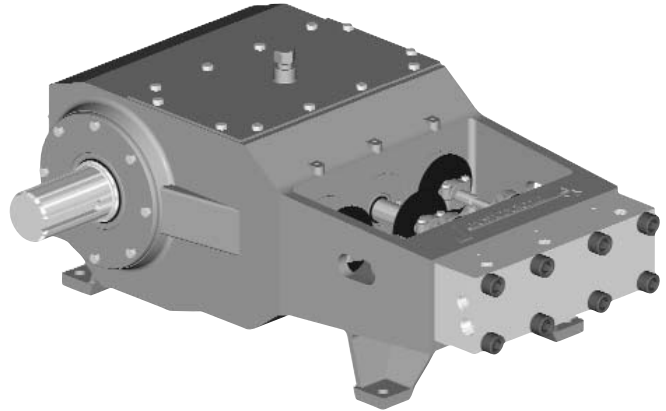
40,000 PSI



MODEL 4240 UNx™ BARESHAFT PUMP

Product Description

The Jetstream model 4240 is capable of power input up to 300 horsepower and flows* approaching twelve gallons per minute at 40,000 psi. It is the most advanced and efficient high horsepower waterblast pump in the industry. Combining the strength and durability of a proven power end workhorse with the unparalleled simplicity, serviceability, and versatility of the UNx fluid end design, Jetstream bareshaft pumps are the best choice for those building their own system or replacing a complicated, worn, or unreliable pump.



Features

UNx Fluid End:

- Superior performance
- Greater flexibility in the field
- Reduced downtime and maintenance
- See UNx Features and Benefits on page A-9

Power End:

- Ductile iron power frame is the strongest in the industry
- Heat treated billet alloy steel crankshaft
- Largest bearings of any pump on the market

Power End Specifications

Max. Power Input		Plungers			Pump RPM		Max. Pump Displacement*		Maximum Frame Load		Max. Operating Pressure		Total Weight		Pump Oil		
		#	Stroke												Type	Capacity	
hp	kW			in	mm	Min.	Max.	gpm	lpm	lbs	N	psi	bar	lbs	kg		gal
300	224	3	4.25	108	150	500	11.5	43.5	17,500	77,900	40,000	2,758	1,800	820	80W-90	9.0	34.0

Fluid End Specifications

Pump Part Number	Plunger Size		Pump Displacement at Specified Pump Speeds*										Max. Operating Pressure		
	No.	Diameter		150 RPM		200 RPM		300 RPM		400 RPM		500 RPM			
		in	mm	gpm	lpm	gpm	lpm	gpm	lpm	gpm	lpm	gpm	lpm	psi	bar
54515	#6	0.600	15.24	2.3	8.9	3.1	11.8	4.7	17.7	6.2	23.6	7.8	29.5	40,000	2,758
54520	#7	0.670	17.02	2.9	11.1	3.9	14.7	5.8	22.1	7.8	29.5	9.7	36.8	40,000	2,758
54525	#8	0.730	18.54	3.5	13.1	4.6	17.5	6.9	26.2	9.2	35.0	11.6	43.7	40,000	2,758

* Displacement (flow) values represented refer to "theoretical" flow, neglecting inefficiency resulting from compressibility of water and expansion of pressure-bearing components.

PUMPS & FLUID ENDS

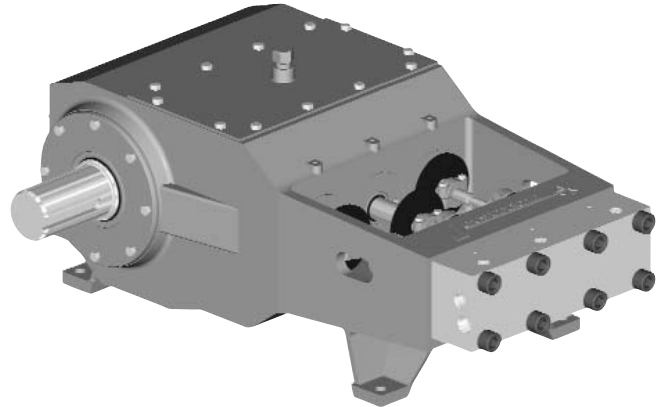
40,000 PSI



MODEL 3640 UNx™ BARESHAFT PUMP

Product Description

The Jetstream model 3640 is capable of power input up to 200 horsepower and flows* exceeding seven gallons per minute at 40,000 psi. It is the most advanced and efficient medium horsepower waterblast pump in the industry. Combining the strength and durability of a proven power end workhorse with the unparalleled simplicity, serviceability, and versatility of the UNx fluid end design, Jetstream bareshaft pumps are the best choice for those building their own system or replacing a complicated, worn, or unreliable pump.



Features

UNx Fluid End:

- Superior performance
- Greater flexibility in the field
- Reduced downtime and maintenance
- See UNx Features and Benefits on page A-9

Power End:

- Ductile iron power frame is the strongest in the industry
- Heat treated billet alloy steel crankshaft
- Largest bearings of any pump on the market

Power End Specifications

Max. Power Input		Plungers			Pump RPM		Max. Pump Displacement*		Maximum Frame Load		Max. Operating Pressure		Total Weight		Pump Oil		
		#	Stroke												Type	Capacity	
hp	kW		in	mm	Min.	Max.	gpm	lpm	lbs	N	psi	bar	lbs	kg			gal
200	149	3	3.63	92	150	550	10.8	40.9	11,300	50,300	40,000	2,758	1,720	780	80W-90	9.0	34.0

Fluid End Specifications

Pump Part Number	Plunger Size			Pump Displacement at Specified Pump Speeds*										Max. Operating Pressure	
	No.	Diameter		200 RPM		300 RPM		400 RPM		500 RPM		550 RPM			
		in	mm	gpm	lpm	gpm	lpm	gpm	lpm	gpm	lpm	gpm	lpm	psi	bar
54500	#6	0.600	15.24	2.7	10.1	4.0	15.1	5.3	20.2	6.7	25.2	7.3	27.7	40,000	2,758
54505	#7	0.670	17.02	3.3	12.6	5.0	18.9	6.6	25.1	8.3	31.4	9.1	34.6	32,000	2,207
54510	#8	0.730	18.54	3.9	14.9	5.9	22.4	7.9	29.8	9.9	37.3	10.8	41.0	27,000	1,862

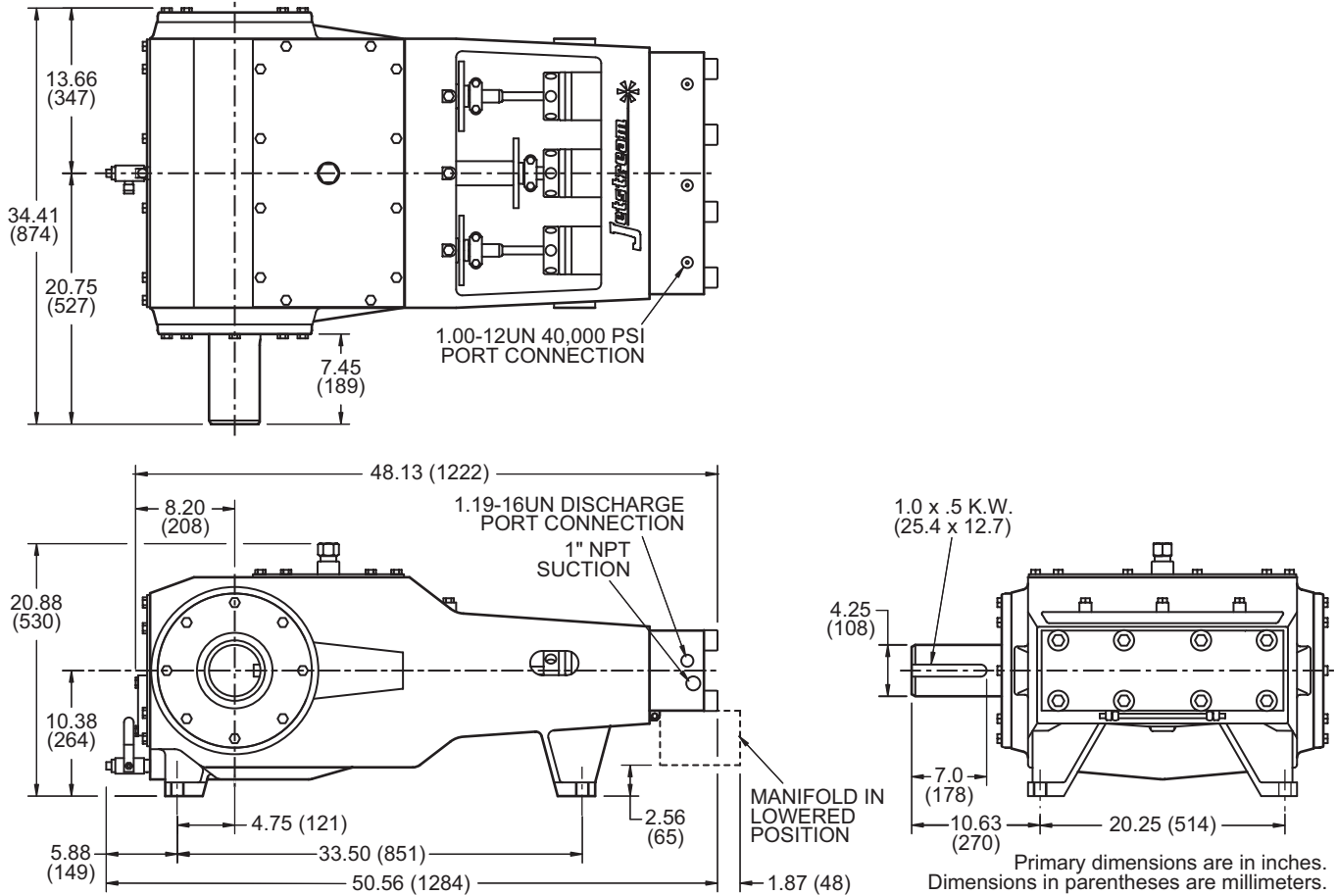
* Displacement (flow) values represented refer to "theoretical" flow, neglecting inefficiency resulting from compressibility of water and expansion of pressure-bearing components.

PUMPS & FLUID ENDS

40,000 PSI



MODEL 3640 UNx™ BARESHAFT PUMP



Horsepower Chart

Pump Displacement at Specified Powers and Pressures*									
Common Engine Powers		Pump Operating Pressure							
		psi		bar		psi		bar	
		30,000	2,069	36,000	2,483	40,000	2,758		
hp	kW	gpm	lpm	gpm	lpm	gpm	lpm		
150	112	7.8	29.3	6.5	24.4	5.8	22.0		
177	132	9.1	34.6	7.6	28.8	6.9	26.0		
200	149	10.3	39.1	8.6	32.6	7.8	29.3		

* Displacement (flow) values represented refer to "theoretical" flow, neglecting inefficiency resulting from compressibility of water and expansion of pressure-bearing components.

Recommended Accessory

POLISHING FILTER PACKAGE – See Unit & Pump Accessories, Page A-20

PUMPS & FLUID ENDS

40,000 PSI

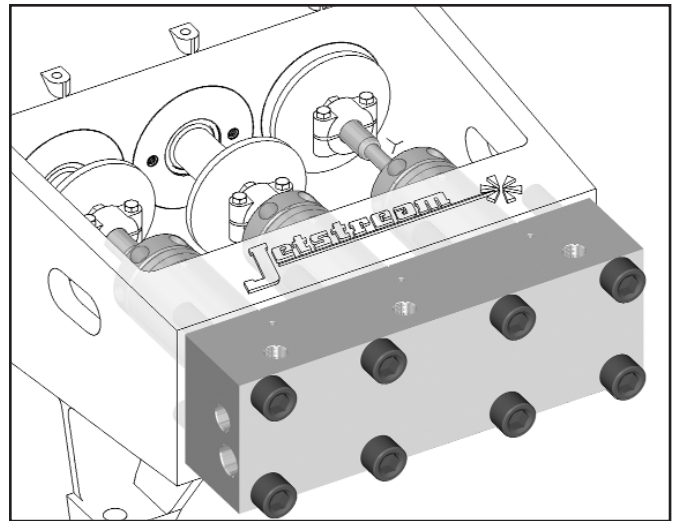


UNx™ FLUID END

Features and Benefits

Product Description

The Jetstream 40,000 psi UNx Fluid End is standard on every Jetstream 40,000 psi unit or bareshaft pump. It is also available as a conversion package for popular pump models or as an addition to an existing Jetstream 3600 or 4200 pump. Please refer to the catalog pages that follow for details on specific available models.



Every UNx Fluid End Features

Serviceability

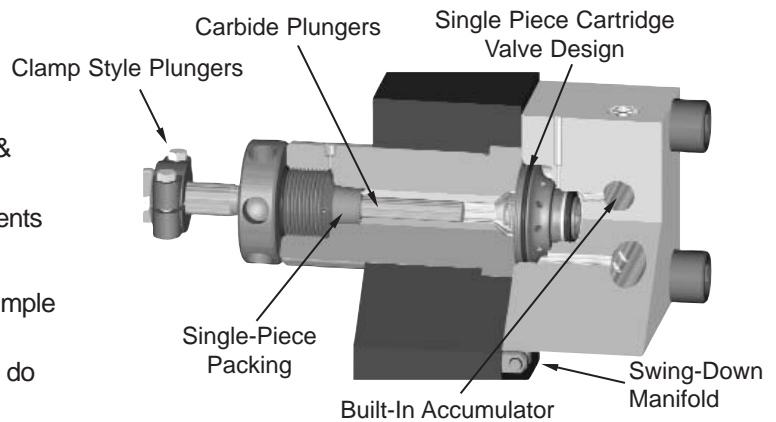
- Five minute packing change
- Fifteen minute pop-out valve cartridge change
- No special tools or equipment required
- Plungers clamped, NOT threaded

Simplicity

- Fewer parts than other 40,000 psi fluid ends
- Uni-Valve™ one-piece cartridges include suction & discharge valves, seats, springs, and seals
- Swing-down manifold for easy access to components

Versatility

- Fast in-the-field pressure range conversion with simple bolt-on Jetstream UNx Fluid Ends
- Convertibility of the UNx design allows one unit to do the work that another manufacturer would require multiple units or several hours of downtime to perform



40,000 psi UNx Fluid End Features

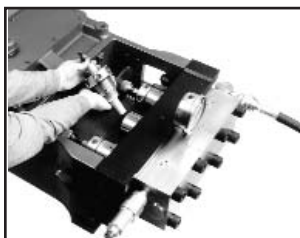
- Water lubricated, single-piece high-lubricity packing ring
- Solid carbide plungers and plunger bushings
- Specially designed discharge and top port connections that are superior to industry standard connections
- High volumetric efficiency
- All pressure-bearing components precision machined from high quality stainless steel
- Pulsation dampener built in to manifold

For more information on the UNx Fluid End design, order [The Advanced UNx Waterblast Pump video](#), available in VHS, DVD & CD-ROM formats.

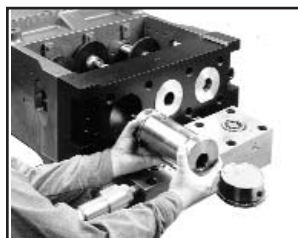
Part Number	Format
27437	VHS
28634	DVD
28635	CD-ROM



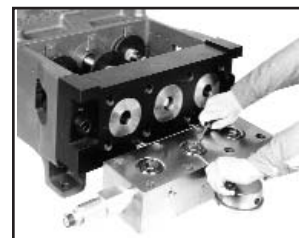
Five Minute Packing Change



Slide Out Stuffing Boxes



15 Minute Valve Replacement



PUMPS & FLUID ENDS

40,000 PSI



UNx™ FLUID END

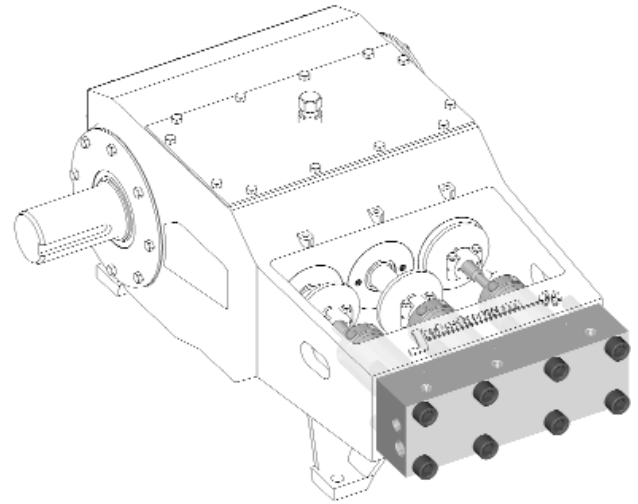
Jetstream 4200 Pumps
Jetstream 3600 Pumps

Product Description

The 40,000 psi UNx Fluid End is a cost-effective solution to increase the available operating pressure or range of pressures of an existing Jetstream 3600 or 4200 UNx Pump. The upgrade delivers all of the benefits of lower pressure UNx Fluid Ends:

- Superior performance
- Greater flexibility in the field
- Reduced downtime and maintenance
- See UNx Features and Benefits on page A-9

Includes gauge, adapter, and two rupture disc holders.
Electric units require a bypass valve, not included.



Fluid End Part Number	Plunger Size		4200 Pumps								3600 Pumps						
	No.	Diameter		Plunger Stroke		Max. RPM	Maximum Flow*		Max. Operating Pressure		Plunger Stroke		Max. RPM	Maximum Flow*		Max. Operating Pressure	
		in	mm	in	mm		gpm	lpm	psi	bar	in	mm		gpm	lpm	psi	bar
53540	#6	0.600	15.24	4.25	108	500	7.8	29.5	40,000	2,758	3.63	92	550	7.3	27.7	40,000	2,758
53545	#7	0.670	17.02	4.25	108	500	9.7	36.8	40,000	2,758	3.63	92	550	9.1	34.6	32,000	2,207
53550	#8	0.730	18.54	4.25	108	500	11.6	43.7	40,000	2,758	3.63	92	550	10.8	41.0	27,000	1,862

Pump Displacement at Specified Powers and Pressures*									
Common Engine Powers		Pump Operating Pressure							
		psi		bar		psi		bar	
		30,000	2,069	36,000	2,483	40,000	2,758		
hp	kW	gpm	lpm	gpm	lpm	gpm	lpm		
150	112	7.8	29.3	6.5	24.4	5.8	22.0		
177	132	9.1	34.6	7.6	28.8	6.9	26.0		
200	149	10.3	39.1	8.6	32.6	7.8	29.3		
215	160	11.1	42.0	9.3	35.0	8.3	31.5		
250	186	12.9	48.9	10.8	40.7	9.7	36.7		
260	194	13.4	50.8	11.2	42.4	10.1	38.1		
300	224	15.5	58.7	12.9	48.9	11.6	44.0		

* Displacement (flow) values represented refer to "theoretical" flow, neglecting inefficiency resulting from compressibility of water and expansion of pressure-bearing components.

Related Items

BYPASS VALVE – See Unit & Pump Accessories, Page A-21

FITTINGS – See Fittings & Gauges, Section E

GAUGES – See Fittings & Gauges, Page E-1

Recommended Accessory

CARTRIDGE STYLE POLISHING FILTER – See Unit & Pump Accessories, Page A-20

PUMPS & FLUID ENDS

40,000 PSI

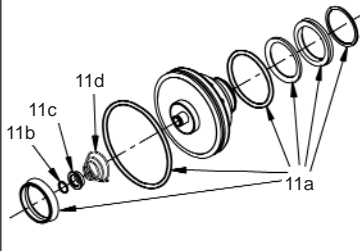


FLUID END REPLACEMENT PARTS

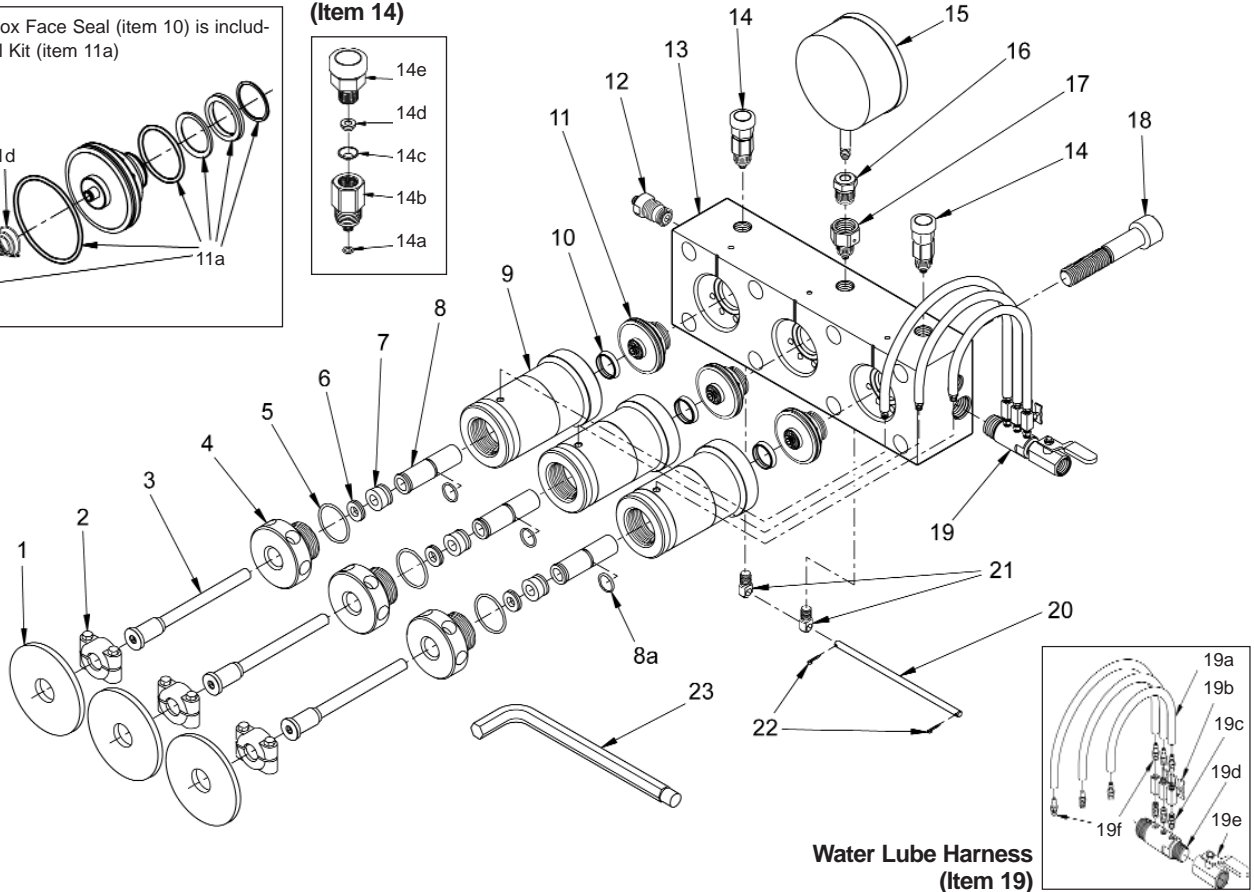
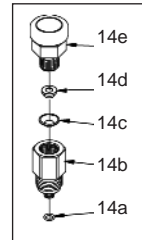
Jetstream 4200 & 3600 Pumps

Uni-Valve (Item 11)

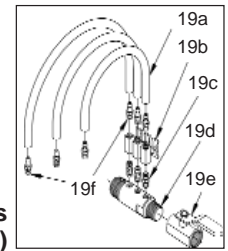
Stuffing Box Face Seal (item 10) is included in Seal Kit (item 11a)



Rupture Disc Assembly (Item 14)



Water Lube Harness (Item 19)



Item	Part Number	Description
1	26487	Deflector
2	51736	Plunger Coupling
3	53561	#6 Plunger
	53562	#7 Plunger
	53563	#8 Plunger
4	54101	Gland Nut
5	26464	O-Ring
6	27479	#6 Guide Bushing
	27480	#7 Guide Bushing
	27481	#8 Guide Bushing
7	54116	#6 Packing
	54117	#7 Packing
	54118	#8 Packing
8	54096	#6 Sleeve
	54097	#7 Sleeve
	54098	#8 Sleeve
8a	26522	O-Ring
9	54099	Stuffing Box
10	54125	Stuffing Box Seal

Item	Part Number	Description
11	53495	Uni-Valve
11a	54143	Seal Kit
11b	28802	Retaining Ring
11c	53492	Spring Retainer
11d	27509	Spring
12	~	See Pump Discharge Fittings, Pages E-4 & E-5
13	53456	Manifold
14	53505	Rupture Disc Holder
14a	27502	O-Ring
14b	53576	Base
14c	28575	Disc, 35,000 psi Burst Pressure
	28576	Disc, 40,000 psi Burst Pressure
	28615	Disc, 45,000 psi Burst Pressure
	27484	Disc, 50,000 psi Burst Pressure
	27485	Disc, 56,000 psi Burst Pressure
14d	53578	Hold-Down Ring
14e	53579	Cap
15	27488	Gauge (0-60,000 psi)

Item	Part Number	Description
16	28090	Anti-Vibration Gland Set
17	53572	Adapter, Male Port x 9/16" HP Female
18	26500	Manifold Bolt
19	53795	Water Lube Harness
19a	26469	Hose (Order in Feet)
19b	27475	Needle Valve
19c	26465	Nipple
19d	53792	Lube Manifold
19e	27101	Ball Valve
19f	26874	Hose Fitting
20	50295	Trunnion Rod
21	51659	Trunnion
22	26468	Cotter Pin
23	50889	Pump Wrench

PUMPS & FLUID ENDS

40,000 PSI



UNx FLUID END UPGRADE

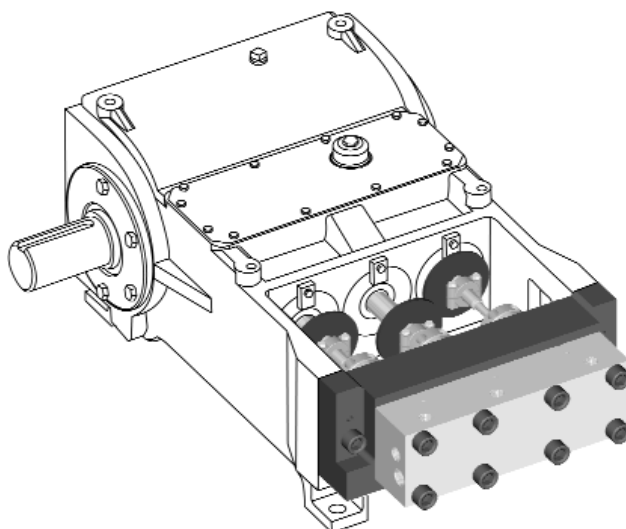
NLB Triplex Pumps 150 to 200 Horsepower

The Jetstream UNx Fluid End is ideal for replacing a damaged, costly, or unreliable fluid end. It is also a cost-effective solution to increase available operating pressure or range of pressures. The upgrade delivers all of the benefits of the UNx Fluid End design:

- Superior performance
- Greater flexibility in the field
- Reduced downtime and maintenance
- See UNx Features and Benefits on page A-9

Requires only minutes to complete simple bolt-on installation to the power end of an existing NLB triplex pump.

Includes gauge, adapter, and two rupture disc holders.



Fluid End Part Number	Plunger Size		Pump Displacement at Specified Pump Speeds*								Max. Operating Pressure		
	No.	Diameter		200 RPM		300 RPM		400 RPM		500 RPM		psi	bar
		in	mm	gpm	lpm	gpm	lpm	gpm	lpm	gpm	lpm		
53750	#6	0.600	15.24	3.1	11.8	4.7	17.7	6.2	23.6	7.8	29.5	40,000	2,758
53755	#7	0.670	17.02	3.9	14.7	5.8	22.1	7.8	29.5	9.7	36.8	40,000	2,758

Pump Displacement at Specified Powers and Pressures*							
Common Engine Powers		Pump Operating Pressure					
		30,000		36,000		40,000	
		psi	bar	psi	bar	psi	bar
hp	kW	gpm	lpm	gpm	lpm	gpm	lpm
150	112	7.8	29.3	6.5	24.4	5.8	22.0
177	132	9.1	34.6	7.6	28.8	6.9	26.0
200	149	10.3	39.1	8.6	32.6	7.8	29.3
215	160	11.1	42.0	9.3	35.0	8.3	31.5

* Displacement (flow) values represented refer to "theoretical" flow, neglecting inefficiency resulting from compressibility of water and expansion of pressure-bearing components.

Related Items

RUPTURE DISC HOLDERS – See Safety, Page F-3

FITTINGS – See Fittings & Gauges, Section E

GAUGES – See Fittings & Gauges, Page E-1

Recommended Accessory

CARTRIDGE STYLE POLISHING FILTER – See Unit & Pump Accessories, Page A-20

PUMPS & FLUID ENDS

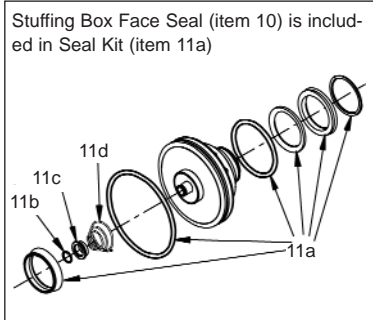
40,000 PSI



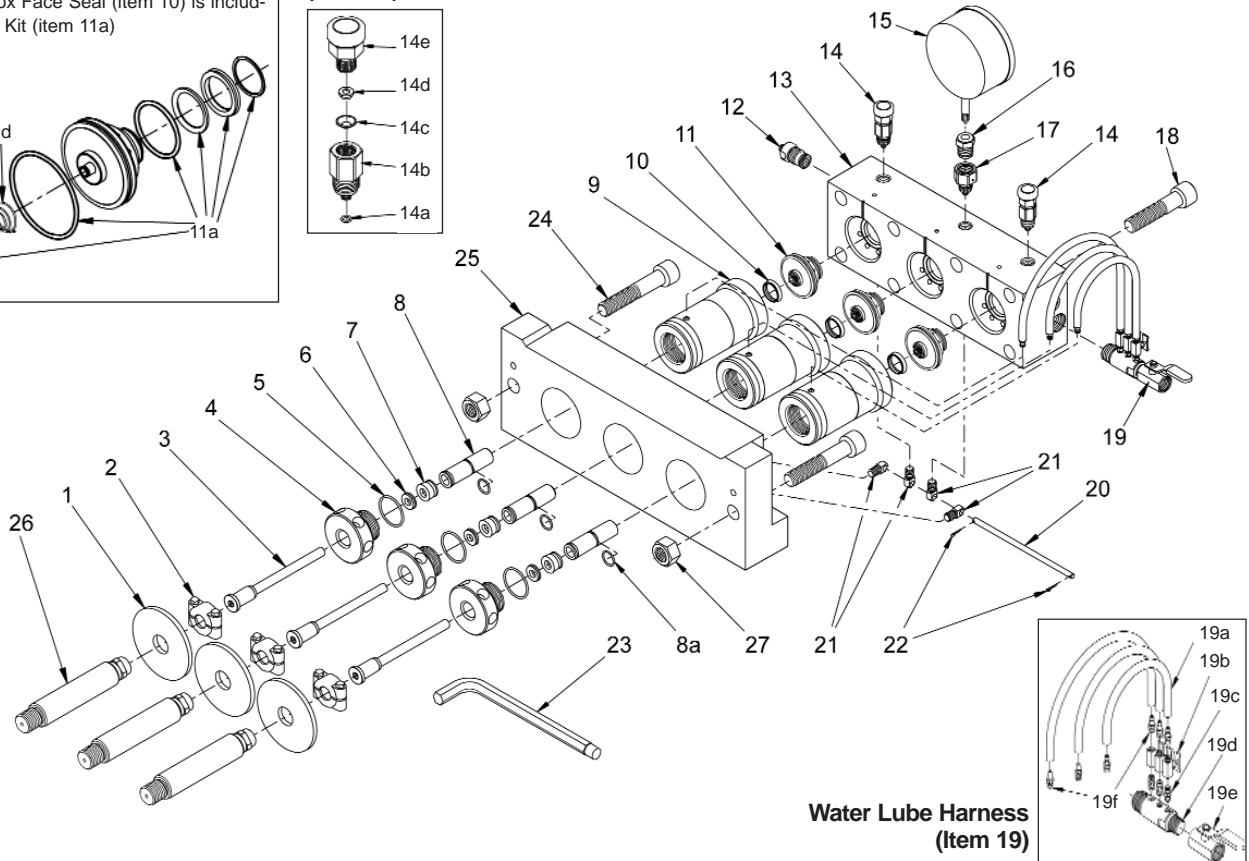
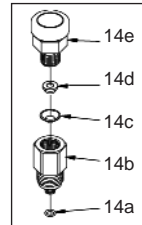
FLUID END REPLACEMENT PARTS

NLB Triplex Pumps (150 to 200 Horsepower)

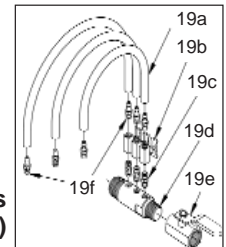
Uni-Valve (Item 11)



Rupture Disc Assembly (Item 14)



Water Lube Harness (Item 19)



Item	Part Number	Description
1	26487	Deflector
2	51736	Plunger Coupling
3	53561	#6 Plunger
	53562	#7 Plunger
4	54101	Gland Nut
5	26464	O-Ring
6	27479	#6 Guide Bushing
	27480	#7 Guide Bushing
7	54116	#6 Packing
	54117	#7 Packing
	54096	#6 Sleeve
8	54097	#7 Sleeve
	8a	26522
9	54099	Stuffing Box
10	54125	Stuffing Box Seal
11	53495	Uni-Valve
11a	54143	Seal Kit
11b	28802	Retaining Ring
11c	53492	Spring Retainer

Item	Part Number	Description
11d	27509	Spring
12	~	See Pump Discharge Fittings, Pages E-4 & E-5
13	53456	Manifold
14	53505	Rupture Disc Holder
14a	27502	O-Ring
14b	53576	Base
14c	28575	Disc, 35,000 psi Burst Pressure
	28576	Disc, 40,000 psi Burst Pressure
	28615	Disc, 45,000 psi Burst Pressure
	27484	Disc, 50,000 psi Burst Pressure
	27485	Disc, 56,000 psi Burst Pressure
14d	53578	Hold-Down Ring
14e	53579	Cap
15	27488	Gauge (0-60,000 psi)
16	28090	Anti-Vibration Gland Set
17	53572	Adapter, 40K Port Male x 9/16" HP Female
18	25607	Manifold Bolt

Item	Part Number	Description
19	53795	Water Lube Harness
19a	26469	Hose (Order in Feet)
19b	27475	Needle Valve
19c	26465	Nipple
19d	53792	Lube Manifold
19e	27101	Ball Valve
19f	26874	Hose fitting
20	50295	Trunnion Rod
21	51659	Trunnion
22	26468	Cotter Pin
23	50889	Pump Wrench
24	26500	Adapter Plate Bolt
25	50293	Adapter Plate
26	51766	Crosshead Stub
27	26669	Nut

PUMPS & FLUID ENDS

40,000 PSI



UNx FLUID END UPGRADE

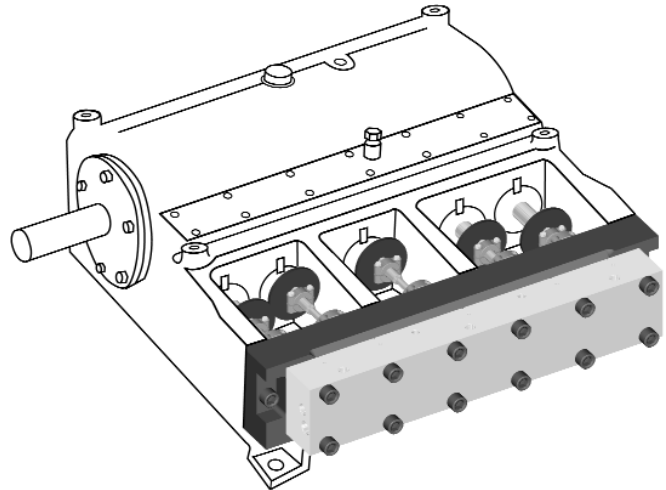
NLB Quintuplex Pumps
250 Horsepower

The Jetstream UNx Fluid End is ideal for replacing a damaged, costly, or unreliable fluid end. It is also a cost-effective solution to increase available operating pressure or range of pressures. The upgrade delivers all of the benefits of the UNx Fluid End design:

- Superior performance
- Greater flexibility in the field
- Reduced downtime and maintenance
- See UNx Features and Benefits on page A-9

Requires only minutes to complete simple bolt-on installation to the power end of an existing NLB quintuplex pump.

Includes gauge, adapter, and two rupture disc holders.



Fluid End Part Number	Plunger Size		Pump Displacement at Specified Pump Speeds*								Max. Operating Pressure		
	No.	Diameter		150 RPM		200 RPM		300 RPM		400 RPM		psi	bar
		in	mm	gpm	lpm	gpm	lpm	gpm	lpm	gpm	lpm		
53700	#6	0.600	15.24	3.9	14.8	5.2	19.7	5.2	19.7	7.8	29.5	40,000	2,758
53705	#7	0.670	17.02	4.9	18.4	6.5	24.6	6.5	24.6	9.7	36.8	40,000	2,758

Pump Displacement at Specified Powers and Pressures*									
Common Engine Powers		Pump Operating Pressure							
		psi		bar		psi		bar	
		30,000	2,069	36,000	2,483	40,000	2,758		
hp	kW	gpm	lpm	gpm	lpm	gpm	lpm		
200	149	10.3	39.1	8.6	32.6	7.8	29.3		
215	160	11.1	42.0	9.3	35.0	8.3	31.5		
250	186	12.9	48.9	10.8	40.7	9.7	36.7		
260	194	13.4	50.8	11.2	42.4	10.1	38.1		

* Displacement (flow) values represented refer to "theoretical" flow, neglecting inefficiency resulting from compressibility of water and expansion of pressure-bearing components.

Related Items

RUPTURE DISC HOLDERS – See Safety, Page F-3

FITTINGS – See Fittings & Gauges, Section E

GAUGES – See Fittings & Gauges, Page E-1

Recommended Accessory

CARTRIDGE STYLE POLISHING FILTER – See Unit & Pump Accessories, Page A-20

PUMPS & FLUID ENDS

40,000 PSI

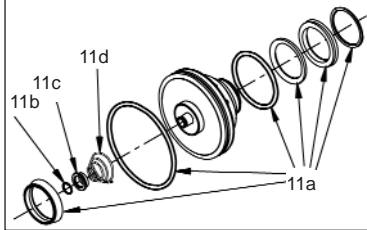


FLUID END REPLACEMENT PARTS

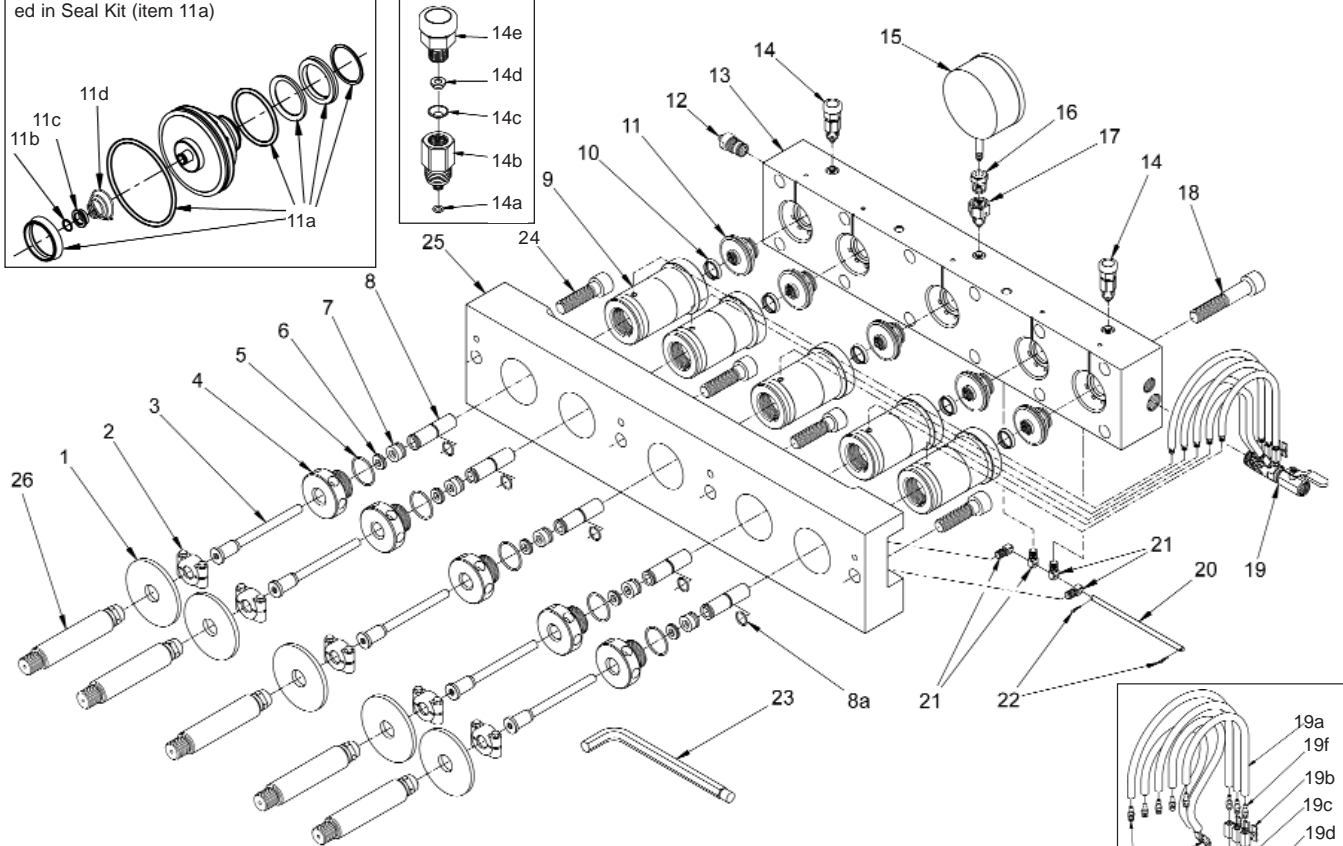
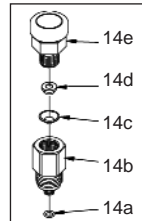
NLB Quintuplex Pumps (250 Horsepower)

Uni-Valve (Item 11)

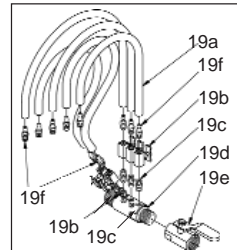
Stuffing Box Face Seal (item 10) is included in Seal Kit (item 11a)



Rupture Disc Assembly (Item 14)



Water Lube Harness (Item 19)



Item	Part Number	Description
1	26487	Deflector
2	51736	Plunger Coupling
3	53561	#6 Plunger
	53562	#7 Plunger
4	54101	Gland Nut
5	26464	O-Ring
6	27479	#6 Guide Bushing
	27480	#7 Guide Bushing
7	54116	#6 Packing
	54117	#7 Packing
8	54096	#6 Sleeve
	54097	#7 Sleeve
8a	26522	O-Ring
9	54099	Stuffing Box
10	54125	Stuffing Box Seal
11	53495	Uni-Valve
11a	54143	Seal Kit
11b	28802	Retaining Ring
11c	53492	Spring Retainer

Item	Part Number	Description
11d	27509	Spring
12	~	See Pump Discharge Fittings, Pages E-4& E-5
13	53754	Manifold
14	53505	Rupture Disc Holder
14a	27502	O-Ring
14b	53576	Base
14c	28575	Disc, 35,000 psi Burst Pressure
	28576	Disc, 40,000 psi Burst Pressure
	28615	Disc, 45,000 psi Burst Pressure
	27484	Disc, 50,000 psi Burst Pressure
	27485	Disc, 56,000 psi Burst Pressure
14d	53578	Hold-Down Ring
14e	53579	Cap
15	27488	Gauge (0-60,000 psi)
16	28090	Anti-Vibration Gland Set
17	53572	Adapter, 40K Port Male x 9/16" HP Female
18	25607	Manifold Bolt

Item	Part Number	Description
19	54270	Water Lube Harness
19a	26469	Hose (Order in Feet)
19b	27475	Needle Valve
19c	26465	Nipple
19d	53792	Lube Manifold
19e	27101	Ball Valve
19f	26874	Hose fitting
20	50295	Trunnion Rod
21	51659	Trunnion
22	26468	Cotter Pin
23	50889	Pump Wrench
24	27550	Adapter Plate Bolt
25	53602	Adapter Plate
26	51766	Crosshead Stub

PUMPS & FLUID ENDS

40,000 PSI



UNx FLUID END UPGRADE

Butterworth L-450

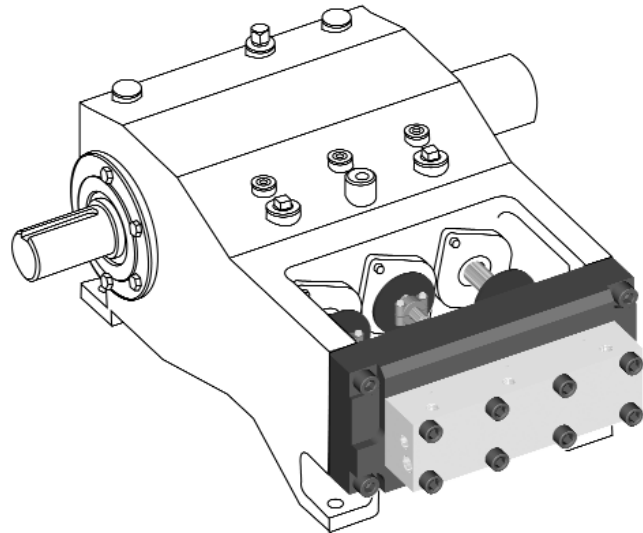
Gardner-Denver TF-450

The Jetstream UNx Fluid End is ideal for replacing a damaged, costly, or unreliable fluid end. It is also a cost-effective solution to increase available operating pressure or range of pressures. The upgrade delivers all of the benefits of the UNx Fluid End design:

- Superior performance
- Greater flexibility in the field
- Reduced downtime and maintenance
- See UNx Features and Benefits on page A-9

Requires only minutes to complete simple bolt-on installation to the power end of an existing Butterworth or Gardner-Denver pump.

Includes gauge, adapter, and two rupture disc holders.



Pump Part Number	Plunger Size		Pump Displacement at Specified Pump Speeds*								Max. Operating Pressure		
	No.	Diameter		200 RPM		300 RPM		400 RPM		500 RPM		psi	bar
		in	mm	gpm	lpm	gpm	lpm	gpm	lpm	gpm	lpm		
53760	#6	0.600	15.24	3.3	12.5	5.0	18.8	6.6	25.0	8.3	31.3	40,000	2,758
53765	#7	0.670	17.02	4.1	15.6	6.2	23.4	8.2	31.2	10.3	39.0	40,000	2,758
53770	#8	0.730	18.54	4.9	18.5	7.3	27.8	9.8	37.0	12.2	46.3	40,000	2,758

Pump Displacement at Specified Powers and Pressures*									
Common Engine Powers		Pump Operating Pressure							
		psi		bar		psi		bar	
		30,000	2,069	36,000	2,483	40,000	2,758		
hp	kW	gpm	lpm	gpm	lpm	gpm	lpm		
200	149	10.3	39.1	8.6	32.6	7.8	29.3		
215	160	11.1	42.0	9.3	35.0	8.3	31.5		
250	186	12.9	48.9	10.8	40.7	9.7	36.7		
260	194	13.4	50.8	11.2	42.4	10.1	38.1		
300	224	15.5	58.7	12.9	48.9	11.6	44.0		

* Displacement (flow) values represented refer to "theoretical" flow, neglecting inefficiency resulting from compressibility of water and expansion of pressure-bearing components.

Related Items

RUPTURE DISC HOLDERS – See Safety, Page F-3

FITTINGS – See Fittings & Gauges, Section E

GAUGES – See Fittings & Gauges, Page E-1

Recommended Accessory

CARTRIDGE STYLE POLISHING FILTER – See Unit & Pump Accessories, Page A-20

PUMPS & FLUID ENDS

40,000 PSI

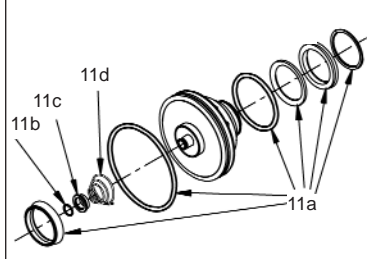


FLUID END REPLACEMENT PARTS

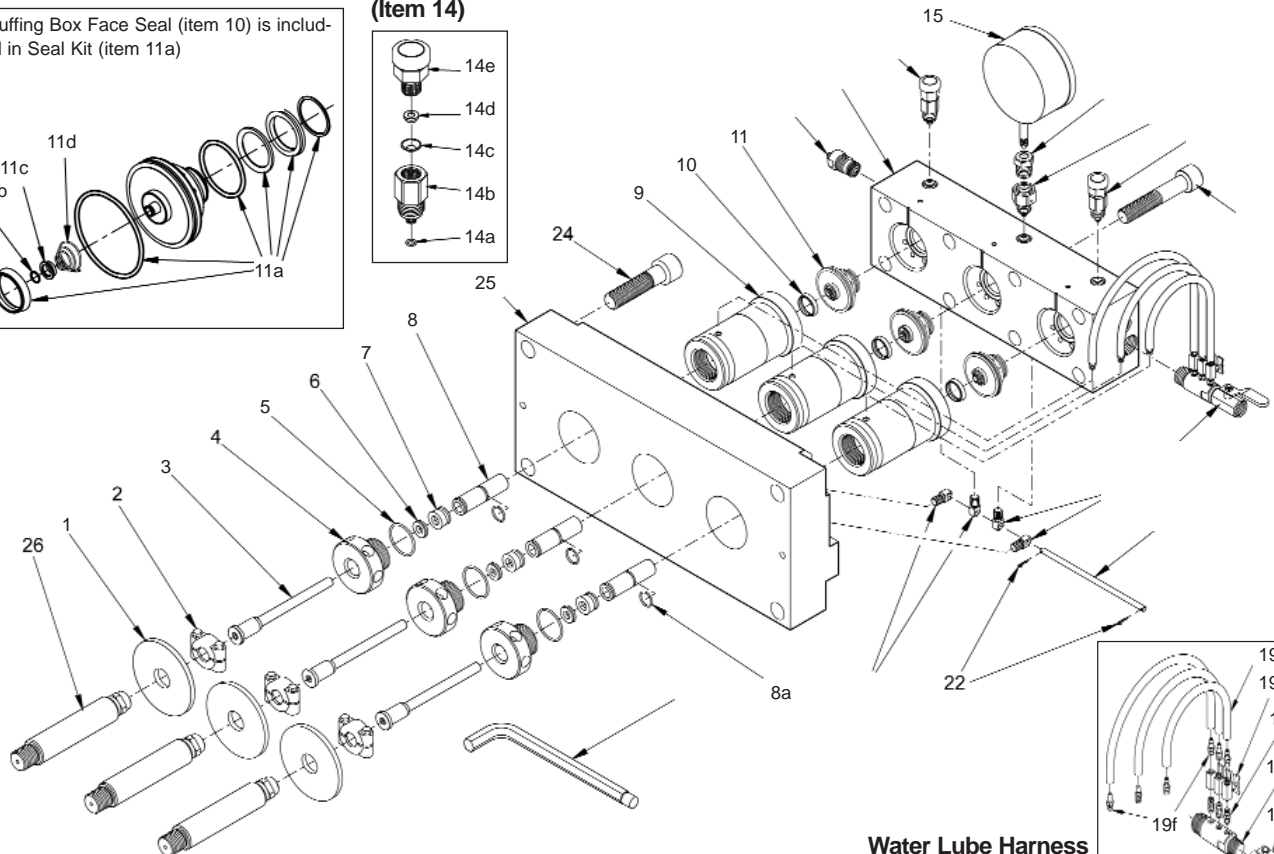
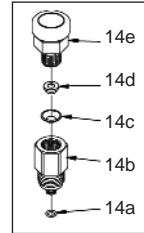
Butterworth L-450 & Gardner-Denver TF-450 Pumps

Uni-Valve (Item 11)

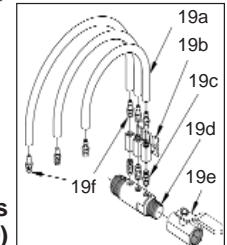
Stuffing Box Face Seal (item 10) is included in Seal Kit (item 11a)



Rupture Disc Assembly (Item 14)



Water Lube Harness (Item 19)



Item	Part Number	Description
1	26487	Deflector
2	51736	Plunger Coupling
3	53561	#6 Plunger
	53562	#7 Plunger
	53563	#8 Plunger
4	54101	Gland Nut
5	26464	O-Ring
6	27479	#6 Guide Bushing
	27480	#7 Guide Bushing
	27481	#8 Guide Bushing
7	54116	#6 Packing
	54117	#7 Packing
	54118	#8 Packing
8	54096	#6 Sleeve
	54097	#7 Sleeve
	54098	#8 Sleeve
8a	26522	O-Ring
9	53769	Stuffing Box
10	54125	Stuffing Box Seal

Item	Part Number	Description
11	53495	Uni-Valve
11a	54143	Seal Kit
11b	28802	Retaining Ring
11c	53492	Spring Retainer
11d	27509	Spring
12	~	See Pump Discharge Fittings, Pages E-4 & E-5
13	53756	Manifold
14	53505	Rupture Disc Holder
14a	27502	O-Ring
14b	53576	Base
14c	28575	Disc, 35,000 psi Burst Pressure
	28576	Disc, 40,000 psi Burst Pressure
	28615	Disc, 45,000 psi Burst Pressure
	27484	Disc, 50,000 psi Burst Pressure
	27485	Disc, 56,000 psi Burst Pressure
14d	53578	Hold-Down Ring
14e	53579	Cap
15	27488	Gage. (0-60,000 psi)

Item	Part Number	Description
16	28090	Anti-Vibration Gland Set
17	53572	Adapter, Male Port x 9/16" HP Female
18	25607	Manifold Bolt
19	53795	Water Lube Harness
19a	26469	Hose (Order in Feet)
19b	27475	Needle Valve
19c	26465	Nipple
19d	53792	Lube Manifold
19e	27101	Ball Valve
19f	26874	Hose Fitting
20	50295	Trunnion Rod
21	51659	Trunnion
22	26468	Cotter Pin
23	50889	Pump Wrench
24	26212	Adapter Plate Bolt
25	51714	Adapter Plate
26	51719	Plunger Adapter

UNIT & PUMP ACCESSORIES

40,000 PSI



HYDRO-THROTTLE

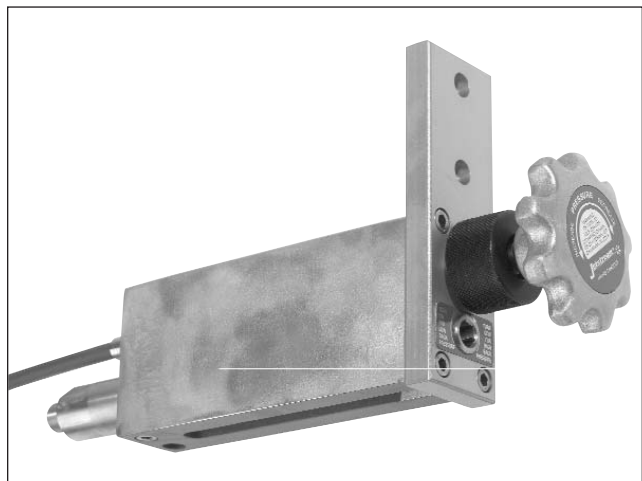
Hydraulic Throttle Control

Product Description

The Jetstream Hydro-Throttle is a hydraulic throttle control that enables the operator to reduce the engine to idle speed and relieve the system of high pressure when the gun trigger is released—saving water and fuel and reducing wear on the engine and pump. When the gun is again engaged, the Hydro-Throttle senses the change in pressure and increases the engine speed until the pump again reaches the desired operating pressure.

Features

- Quick panel or bracket mount installation
- Easily knob adjustable under all operating conditions
- Flexible control cable for quick, easy routing and minimal drag
- Replaceable cartridge for fast field service or conversion to another pressure range
- Back-pressure adjustment screw to overcome excessive system back-pressure when control gun is disengaged



Assemblies include control unit, cartridge, and control cable. 6 ft. hose, sold below, is required to connect unit

Part Number	Control Cable Length		Hose Connection Thread	Control Unit Size (L x W x H)		Weight		Max. Operating Pressure	
	ft	m		in	mm	lbs	kg	psi	bar
54595	2	0.6	9/16" Type "M"	11.7 x 1.75 x 5.6	297 x 44.5 x 142	4	1.8	40,000	2,758
54600	5	1.5	Female						

Replacement Parts

- 53609 Cartridge
- 51903 Control Cable, 2 ft. solid wire
- 51903A Control Cable, 5 ft. braided wire
- 27731-00639392 Hose

Related Items

- 53671 Adapter, 9/16" Type "M" Male x Pump Discharge Male (for use on Jetstream pumps)
 - 27706 Adapter, 9/16" Type "M" Male x 9/16" High Pressure Male
- For other connection types, see Fittings, Section E

UNIT & PUMP ACCESSORIES

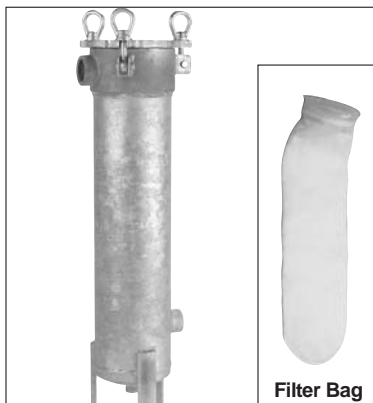
40,000 PSI



FILTERS



Part Number 25865P
40 gpm Galvanized Filter



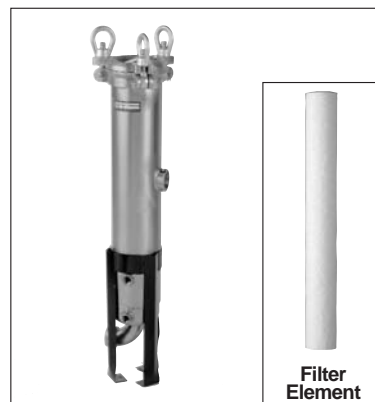
Part Number 52735
200 gpm Galvanized Filter



Part Number 99358
200 gpm Stainless Steel Filter

Product Description

Available for a range of flows to meet all needs, Jetstream filters provide the necessary protection to even the most versatile waterblast system. The severe conditions of 40,000 psi pumps require a higher degree of protection, and it is recommended that water is filtered to 10 microns by a primary filter and then by a secondary 1 micron filter before entering the pump.



Part Number 27503
Cartridge Style Polishing Filter

Part Number	Use	Flow Rating		Connection (NPT)		Material	Stand Part Number*	Maximum Pressure	
		gpm	lpm	inlet	Outlet			psi	bar
25865P	General Purpose	40	150	1 1/2"	1 1/2"	Galvanized	27460	150	10
52735	General Purpose	200	760	2"	1 1/2"	Galvanized	Included	150	10
99358	General Purpose	200	760	2"	2"	Stainless	52704	150	10

*If sold separately

Filter Part Number	Filter Bags					Replacement Parts				
	5 micron	10 micron	25 micron	50 micron	75 micron	Lid Gasket	Basket	Swing Bolt	Eye Nut	Clevis Pin
25865P	28806	26916	25117	25866	25118	25190	26278B	25865-1	25865-2	25865-3
52735	27688	26765	26766	27497	-	26959	26769	26961P	26962P	26960P
99358	27688S	26765S	26766S	27497S	-	26959	26769	99358-1	99358-2	99358-3

Filter Part Number	Filter Cartridges		Replacement Parts					
	1 micron	3 micron	Lid Gasket	Cartridge Retaining Bolt	Cartridge Retaining Washer	Swing Bolt	Eye Nut	Clevis Pin
27503	27504	27505	27796	27503-4	27503-5	27503-1	27503-2	27503-3

UNIT & PUMP ACCESSORIES

40,000 PSI



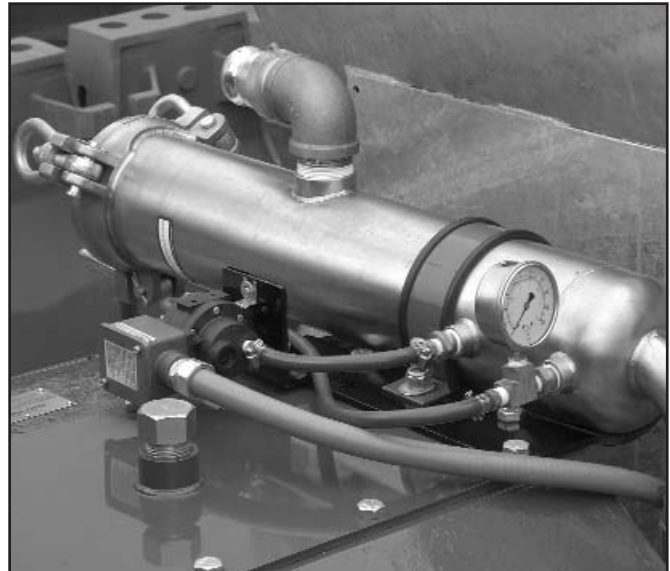
POLISHING FILTER PACKAGE

Product Description

A recommended accessory for any 40,000 psi UNx bareshaft pump or fluid end, this package provides the necessary protection to prevent damage to the pump caused by poorly filtered or insufficient water supply. Intended for use as a secondary filter only, not as a substitute for a primary filter.

Features

- Secondary Filter Assembly can be mounted directly to all Jetstream and some non-Jetstream brand power frames (as shown) or mounted vertically, using the stand that is included (not shown); see part number 27503 on page A-19 for filter specifications
- Differential pressure switch detects clogged filter elements and shuts down unit to prevent cavitation (Also sold separately below)
- Cam-Lok connections for easy conversions to and from fluid ends with lower pressure ranges
- Hose, fittings, mounting hardware, wiring, 1 micron filter element, and inlet water pressure gauge included



Part Number 53596 Polishing Filter Package

Replacement Parts

27504	1 Micron Filter Element (recommended)
27505	3 Micron Filter Element
27796	Filter Lid Gasket
27503-4	Filter Cartridge Retaining Bolt
27503-5	Filter Cartridge Retaining Washer
27503-1	Filter Swing Bolt
27503-2	Filter Eye Nut
27503-3	Filter Clevis Pin
28112	Differential Pressure Switch

Differential Pressure Switch Package, including switch, hoses, fittings, wiring, and mounting hardware, can be purchased separately and added to existing filters.

Part Number 54182



Part Number 27504 1 Micron Filter (20" Length)

UNIT & PUMP ACCESSORIES

40,000 PSI

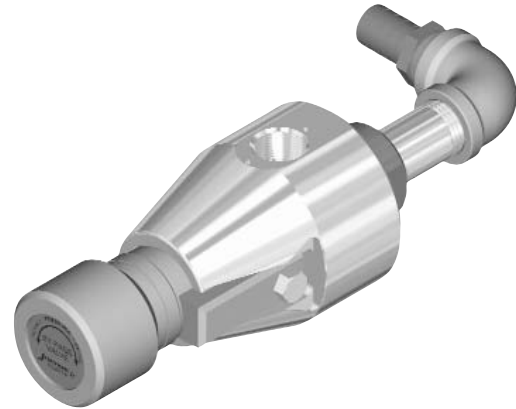


BYPASS VALVE

Hand Adjustable

Product Description

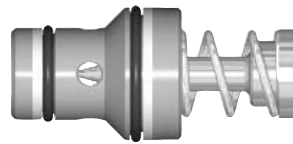
A bypass valve diverts a portion of pump flow to a low-pressure outlet and can be used on diesel and electric units. For diesel engines, it is used to prevent bogging of the engine when using flows at the low end of the pump's capability. A bypass valve is required on electric units due to the non-adjustability of motor speed.



Features

- Two minute field-replaceable cartridge design for minimal downtime
- Hand adjustment—no wrench needed
- Mounts directly to fluid end manifold using 40,000 psi Male Port Nipple (shown below)
- All pressure-bearing components precision machined from stainless steel
- Two inlet ports utilize Jetstream 40,000 psi Port Connection for wear resistance and fast, simple connections

Replacement Cartridge



Easily replaceable valve cartridge enables the user to completely re-build the valve in about two minutes! Both the valve and seat are manufactured from

hardened stainless steel and coated for maximum wear resistance and service life.

Part Number 53725

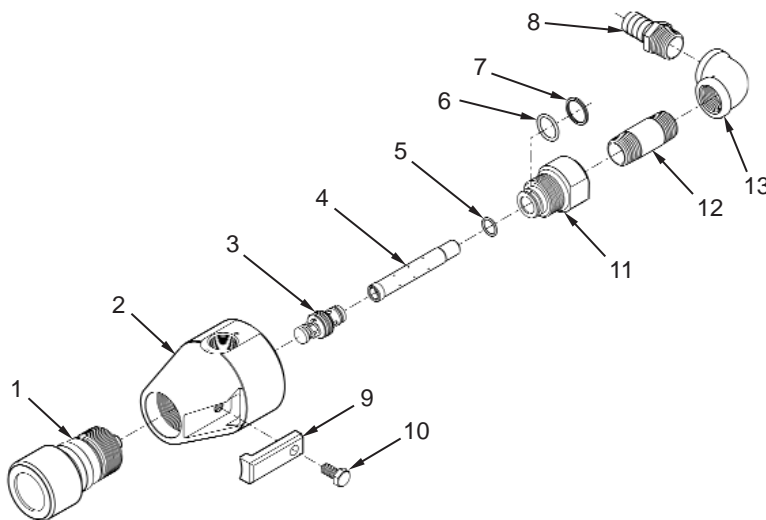
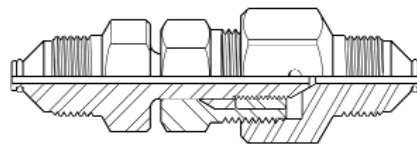
Part Number	High Pressure Connections	Outlet Connection	Dimensions (L x D)		Weight		Max. Operating Pressure	
			in	mm	lbs	kg	psi	bar
53715	Jetstream 40K Port Female	3/4" Hose Barb	11.6 x 3.5	295 x 89	10.9	5.0	40,000	2,758

Related Accessories

40K MALE PORT NIPPLE

Used to connect bypass valve to fluid end manifold. Jetstream 40,000 psi Port Male connection.

Part Number 53735



Replacement Parts

Item	Part Number	Description
1	52144	Adjustment Knob
2	53713	Body
3	53725	Cartridge
4	53726	Diffuser
5	26452	O-Ring
6	27641	O-Ring
7	53724	Back-Up Ring
8	25796	Hose Fitting
9	50795	Locking Arm
10	25593	Capscrew
11	53719	Outlet Adapter
12	27644	Nipple
13	27645	Elbow
14*	25932	Hose (Order in Feet)

* Not Shown