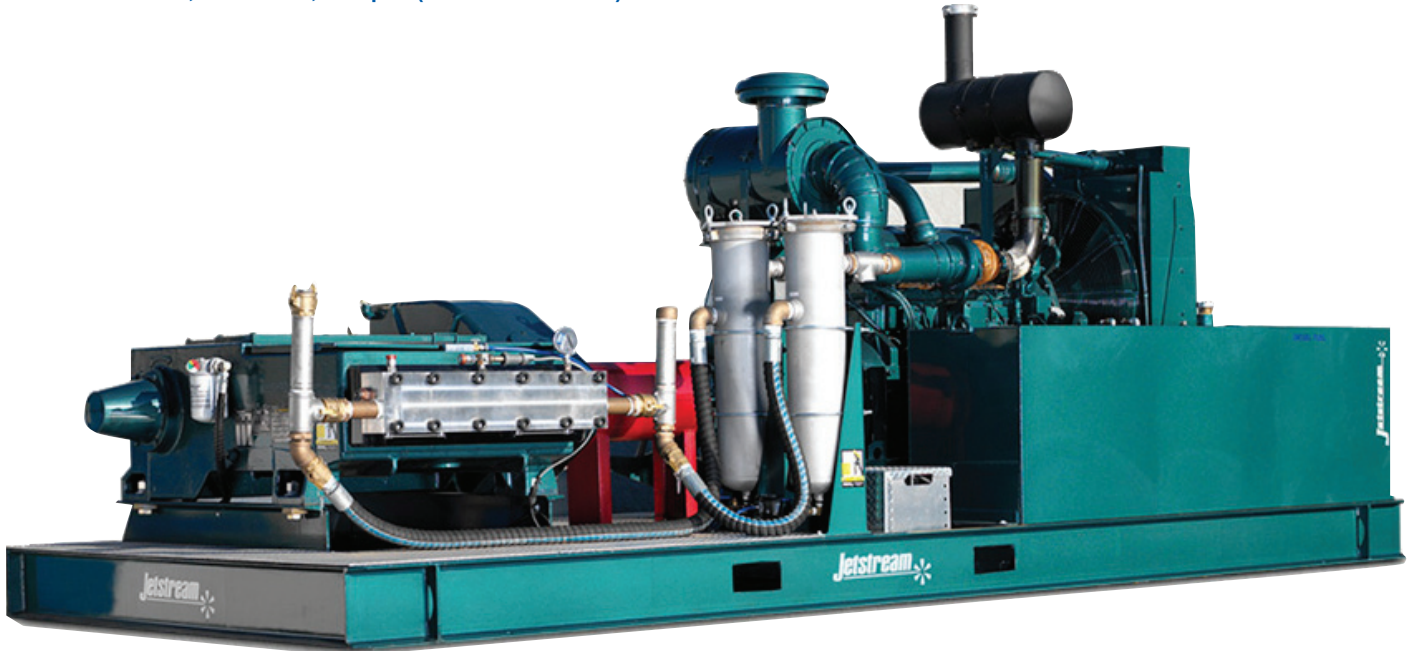


# 5000Q SERIES WATERBLAST UNITS



500 Horsepower (375 kW) • Flows up to 98 gpm (371 lpm)  
Pressures from 8,000 to 40,000 psi (550 to 2750 bar)



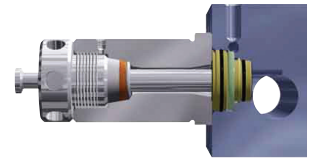
**THE MOST VERSATILE AND COST EFFECTIVE 500 HORSEPOWER WATERBLASTER AVAILABLE**

Combining the unparalleled performance of patented UNx™ fluid end technology with the strength and durability of a robust power end, 5000Q pumps can handle power input of 500 horsepower (375 kilowatts) and deliver output from 98 gpm (371 lpm) at 8000 psi (550 bar) to over 19 gpm (72 lpm) at 40,000 psi (2750 bar).

## 5000Q SERIES WATERBLAST UNIT FEATURES

- UNx pumps offer superior performance, greater flexibility in the field, and reduced downtime
- Powered by high performance engines from John Deere or Cummins (other engines available upon request)
- Available with transmission or PTO
- State-of-the-art control and safety devices
- Standard skid can be mounted to a gooseneck trailer or special models can be engineered for specific needs
- Hot-dipped galvanized base
- Jetstream's modular technology allows nearly unlimited opportunity for customized solutions

## THE UNx™ ADVANTAGE



### Serviceability

- Five minute packing change
- Fifteen minute pop-out valve cartridge change
- No special tools or equipment required
- Clamp style plungers for easy maintenance

### Simplicity

- Fewer parts, fewer problems
- Uni-Valve™ cartridge includes suction and discharge valves, seat, springs, and seals in one self-contained component
- Swing-down manifold for easy access to components

### Versatility

- Fast in-the-field pressure range conversion with simple bolt-on Jetstream UNx™ Fluid Ends
- A single unit, equipped with conversion fluid ends, can handle any job



5015Q Skid unit with canopy and lifting frame for an offshore application

5000Q Series Waterblast Units UNx Technology . . . Raised to a Higher Power

# 5000Q SERIES WATERBLAST UNITS

## STANDARD SYSTEM FEATURES & SPECIFICATIONS

### Engine High performance Tier 2 open power units

- John Deere 6125H
- Cummins QSX-15
- High Visibility Instrument panel
- Low oil pressure and high water temperature shutdowns
- Other engines available upon request

### Drive System Manual transmission or power take-off (PTO)

- Eaton Roadranger FRO-18210C manual transmission
  - Oil Cooler
  - Gear shift lever and foot-operated clutch
- PEC three plate 14 inch PTO

### Power End National Oilwell HDQ-5

- Robust quintuplex (5 plunger) design
- Pressurized power end lubrication with oil filter and cooler
- Plunger stroke: 5 inch (127mm)
- Maximum plunger load: 26,500 lbs. (117900N)
- 4.84:1 Gear pack with oil bath lubrication
- Forged steel shotpeened crankshaft
- Center crankshaft roller bearings

### Fluid End Available in three models and five plunger sizes

- In-line cartridge style Uni-Valves
- Swing-down manifold for easy access to stuffing boxes and slip fit valves
- Water-lubricated packing
- Highest volumetric efficiency in the industry
- Plungers specifically designed to suit each pressure level
- Tapered single piece packing
- Dual rupture disc holders
- High visibility pressure gauge

### Filters

- Dual 200 gpm stainless steel filters with 10 micron bags
- 5040Q pumps have additional dual stainless steel secondary filters to provide 1 micron water supply

### Skids

- 10 inch galvanized channel frame with forklift slots
- Decked with galvanized serrated floor grating

### Additional Features

- 300 gallon fuel tank
- Fuel saving Hydro-Throttle reduces engine speed when system pressure is relieved
- Low water supply pressure shutdown

### Dimensions and Weight

- 90" wide x 220" long (2290 mm wide x 5600 mm long)
- Approximate weight: 15,000 lbs (6800 kg)

### Optional Equipment

- Centrifugal charge (feed) pump
- Pressure regulator valve
- Safety Package
- Severe service relief valve
- Bypass valve
- Water tank



Trailer mounted tandem unit delivers twice the cleaning power

## PUMP PERFORMANCE CHARTS

### 5040Q Fluid End - #8 Plungers

Gear*	Engine Speed (RPM)	Pump Flow*		Max Operating Pressure	
		gpm	lpm	psi	bar
1	2100	7.4	28	40,000	2750
2	2100	10.3	39	40,000	2750
3	2100	14.2	54	40,000	2750
4/PTO	2050	19.2	73	40,000	2750

### 5020Q Fluid End - #11 Plungers

Gear*	Engine Speed (RPM)	Pump Flow*		Max Operating Pressure	
		gpm	lpm	psi	bar
1	2100	15.7	59	20,000	1400
2	2100	21.8	83	20,000	1400
3	2100	30.0	114	20,000	1400
4/PTO	2000	39.5	150	20,000	1400

### 5020Q Fluid End - #12 Plungers

Gear*	Engine Speed (RPM)	Pump Flow*		Max Operating Pressure	
		gpm	lpm	psi	bar
1	2100	20.1	76	15,000	1000
2	2100	28.0	106	15,000	1000
3	2100	38.5	146	15,000	1000
4/PTO	2000	50.6	192	15,000	1000

### 5015Q Fluid End - #15 Plungers

Gear*	Engine Speed (RPM)	Pump Flow*		Max Operating Pressure	
		gpm	lpm	psi	bar
1	2100	31.4	119	15,000	1000
2	2100	43.7	165	15,000	1000
3	2100	60.2	228	13,000	900
4/PTO	2000	79.1	299	10,000	700

### 5015Q Fluid End - #16 Plungers

Gear*	Engine Speed (RPM)	Pump Flow*		Max Operating Pressure	
		gpm	lpm	psi	bar
1	2100	39.0	148	10,000	700
2	2100	54.2	205	10,000	700
3	2100	74.6	282	10,000	700
4/PTO	2000	98.0	371	8,000	550

\* For PTO Drive, use flow and pressure for 4th Gear

\*\* Flow values refer to theoretical flow, neglecting inefficiency resulting from compressibility of water and expansion of pressure bearing components.



Subsidiary of Federal Signal Corporation

800 - 231 - 8192 Toll free in USA 4930 Cranswick Road  
713 - 462 - 7000 Telephone Houston, TX 77041 USA  
713 - 462 - 5387 Fax

[www.waterblast.com](http://www.waterblast.com)

Your Waterblast Solutions Provider

